

Thank you for choosing ParquetVinyl! If you install your new floor carefully and take care of it, it will look perfect for years.

### BEFORE YOU START / PREPARATIONS

Improper installation will void warranty. Please read all the instructions before you begin the installation.

#### IMPORTANT NOTICE

- Ensure that the room temperature after installation is not lower than 10°C. Extremely high or extremely low temperatures can result in the floor expanding or contracting, leading to visual defects in the floor that are not covered by the guarantee.
- If the floor does not have a pre-attached underlayment, we strongly recommend that you use a subfloor. Best results can be expected with an underlayment of 1mm to 1,5mm thickness, with a high density (>180 kg / m<sup>3</sup>) and high compressive strength (>200kPa) that supports the click system during daily use; e.g. Acoustic Control. Underlayments with a low density and an inadequate compressive strength could damage the locking mechanism and will void warranty. If the floor has a pre-attached underlayment, the use of an additional underlayment could damage the locking mechanism and will void warranty.
- Before installing the floor check that the batch numbers of the supplied floor are identical (this is stated on the packaging). It is recommended that you use boxes with the same batch number per room, to avoid differences in colour or sheen in the same floor.
- Do not use any damaged or irregular panels. If you use these for the flooring, the guarantee no longer applies.
- Slight colour deviations cannot be avoided during the production of vinyl floors, which is why you should always mix the boards from 2 to 3 packages to achieve the best result.

- Calculate the room's surface area prior to installation and depending on the shape and installation area, ensure that you plan an extra 5 - 10% of flooring for cutting waste.
- The room temperature must remain between 20°C and 25°C prior to and during installation, between 10°C and 50°C after installation. Portable heaters are not recommended as they may not heat the room and subfloor sufficiently. Kerosene heaters should never be used.
- If the packages are exposed to extreme temperatures for over 2 hours (below 10°C or above 40°C) in the 24 hours prior to installation, these packages will need to acclimatise. You should then store these at room temperature for at least 12 hours in the unopened packaging before starting installation.
- On opening the packaging the boards may emit a strong odour. This will disappear after a few hours.
- For surfaces larger than 400 m<sup>2</sup> or longer than 20 continuous metres (lengthwise or widthwise), you must definitely use an expansion joint. It is important that you use expansion joints every 10 m if the room is subject to extreme temperature fluctuations.
- Inspect your subfloor before you start. This must be dry, clean and level, with a tolerance of 5 mm across a length of 3 m. The substrate should not slope more than 25mm per 2 meters in any direction.
- Even though ParquetVinyl is waterproof, it should not serve as a moisture barrier. The subfloor must be dry (max. 2,5% moisture content; anhydrite 0,7% - CM test), clean and free of all foreign material such as dust, wax, solvents, paint, grease, oils and old adhesive residue.
- This product is not suitable for rooms with a risk of flooding, such as saunas and outdoor areas. The product is intended for indoor use.
- Basements and crawl spaces must be dry. Use of a 0,15 mm poly-film is required to cover 100% of the crawl space earth.
- If this floor is to be installed on top of an existing wooden floor, any loose planks must be replaced and any cracks should be repaired prior to installation. We recommend laying the new floor crosswise to the existing wooden floor. All other subfloors - Plywood, OSB, particleboard, chipboard, wafer board, etc. must be structurally sound and must be installed following their manufacturer's recommendations.
- If this floor is installed on tiles, the following conditions must be met: the height difference may not be more than 5 mm over a length of 3 m.
- The cement grout joints must be less than 5 mm wide and no more than 4 mm deep. Depressions, deep grooves, expansion joints and other subfloor imperfections must be filled with patching & leveling compound.
- Do not use products containing petroleum, solvents or citrus oils to prepare substrates as they can cause staining and expansion of the new flooring.

# ParquetVinyl

the look of wood the ease of vinyl

- Do not install on top of (this is not an exhaustive list): hardwood floors or wood subfloors that have been installed directly onto concrete, carpet, an existing vinyl floor with a soft layer, e.g. made from PU foam, a floating floor, floating parquet, loose lay or linoleum with perimeter install.
- With a floating floor you must always ensure you leave a 8 mm gap between walls and fixtures such as pillars, stairs, etc. These gaps will be covered with trim moldings after the floor is installed. ParquetVinyl should be installed floating and must remain floating. It is not permitted to place built-in furniture or extremely heavy furniture on the floor. You should install the floor around the built-in furniture.
- Do not grout the link between the skirting and the floor. Use a profile.
- Decide on the installation direction. It is recommended to install the length direction of the boards perpendicular to the window or main light source. Measure the space: the width of the last board should not be less than 50 mm. If this is the case, you should adjust the width of the first row. In narrow halls it is recommended that you install the boards lengthwise parallel to the hall.
- Prior to installation, inspect all material in daylight for defects or discrepancies in colour or shine; check the edges of the flooring for straightness and any damage. No claims on surface defects will be accepted after installation.
- Complaints regarding colour differences between the samples viewed at the distributor and the floor that was actually delivered must be notified prior to installation. Installing the floor means that you have approved the look of the boards.
- Check if subfloor/site conditions comply with the specifications described in these instructions. If you are not satisfied, do not install, and contact your supplier.
- Flooring products can be damaged by rough handling before installation. Exercise care when handling and transporting these products. Store, transport and handle the flooring planks in a manner to prevent any damage. Store cartons flat, never on edge.
- Flooring products can be heavy and bulky. Always use proper lifting techniques when handling these products. Whenever possible, make use of material-handling equipment such as dollies or material carts. Never lift more than you can safely handle; get assistance.

## UNDERFLOOR HEATING and COOLING

- ParquetVinyl can be installed over 12 mm embedded radiant heat using the floating method.
- Installation on top of low temperature electric underfloor heating that is installed on top of the screed is only possible if the maximum power is below 60 W/m<sup>2</sup> and the heat distribution is homogenous across the entire floor.
- The underfloor heating must be installed in accordance with the supplier's instructions and in accordance with general requirements and regulations. ParquetVinyl should always be installed floating. At least 4 mm space must be left between the heating system and the ParquetVinyl.
- When using a subfloor, the heat resistance should be monitored.
- Ensure that the surface temperature is never higher than 28°C. It may not be 5°C lower than room temperature or lower than 18°C. Use of an in-floor temperature sensor is recommended to avoid overheating.
- When installing on recently installed underfloor heating systems: switch the system to maximum power to remove moisture from the underfloor heating's cement layer. The screed moisture content percentage may not be higher than 1,5% - anhydrite: 0,5% (CM test).
- Turn the heat off for 24 hours before, during and 24 hours after installation when installing over radiant heated subfloors. Ensure that the room temperature during installation is between 20°C and 25°C. It is recommended that the underfloor heating is started up gradually (max. 5°C/day).
- It is important that underfloor cooling systems are equipped with a control and safety system that prevents the temperature dropping below the internal condensation point. The minimum temperature may not be below 18-22°C depending on where the floor is installed. In humid climates, 22°C is the minimum permitted temperature; in average climates 18°C is permitted.
- For additional information please refer to the underfloor heating manufacturer's recommendations.

## TOOLS:

- |  |  |
|--|--|
| <input type="checkbox"/> Spacers       | <input type="checkbox"/> Pencil        |
| <input type="checkbox"/> Rubber mallet | <input type="checkbox"/> Tape measure  |
| <input type="checkbox"/> Ruler         | <input type="checkbox"/> Utility knife |

# ParquetVinyl

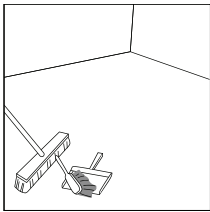
the look of wood *the ease of vinyl*

## INSTALLATION

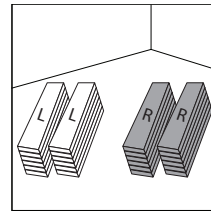
- Remove baseboard, quarter-round moldings, wall base, appliances and furniture from the room. For best results, door trim should be under-cut to allow flooring to move freely without being pinched. After preparation work, sweep and vacuum the entire work area to remove all dust and debris.
- With a floating floor, you must always ensure you leave a 8 mm gap between walls and fixtures such as pillars, stairs, etc. These gaps will be covered with skirtings after the floor is installed.
- Whenever possible, plan the layout so that the joints in the boards do not fall on top of joints or seams in the existing substrate.
- Do not install your kitchen cabinets directly over your floor. The floor's quality can be guaranteed as long as the floor can move freely.

**CUTTING TIPS:** To cut the plank, use a simple utility knife and ruler, and with the top side facing up, cut heavily and several times on the same axis. The knife will not go through the surface but make a deep cut. You can then lift one half of the plank using your other hand to hold down the second placing it very close to the cut. The plank will split naturally. For ease of installation, cuts may be made using a laminate or vinyl flooring cutter.

**ATTENTION:** the letter "L" or "R" marked on the back of each herringbone plank indicates two different profiling directions. There is the same number of L planks and R planks in each box. Please pay attention to the markings and always install them paired together. In below instructions, L planks are represented in white, R marked planks are represented in grey.

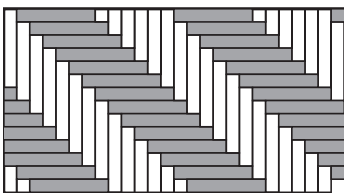


The subfloor should be even, dry, clean. Carpet staples or glue residues must be removed, and the floor must be clean to ensure proper installation.

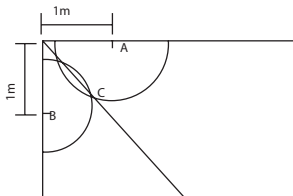


Separating into distinctive piles will make it easier to find the correct plank should the L or R markings be cut off.

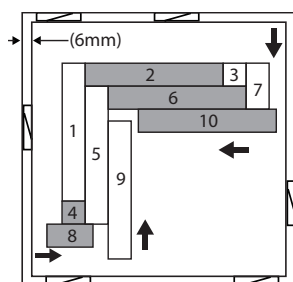
## METHOD 1 - HERRINGBONE DIAGONAL PATTERN



Using a pencil, a string and a ruler, draw a line at 45° that will be used to align the pattern according to the image. You can then start staggering your spacers across your wall, leaving a 8 mm expansion gap with the wall.



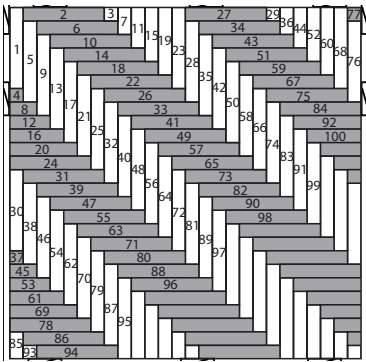
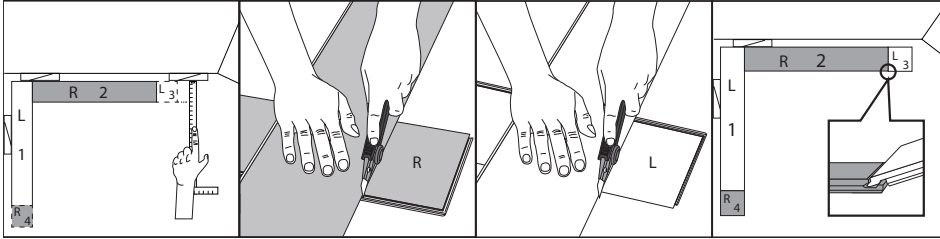
Start from the left corner opposite from the door. Use an "L" marked plank first and put the tongue sides against the wall. Then take your 2nd plank (marked "R") and place it perpendicularly to the 1st (Refer to the clicking tips on the bottom of this page). For the 3rd and 4th plank, refer to the cutting tips below. Continue the installation according to the sequence.



**CUTTING TIPS:** To install the 3rd (L), 4th (R) and any other plank that will have the short side against the wall, measure the length of the plank to fit and cut accordingly. Make sure you use the correct side of the plank (see images below).

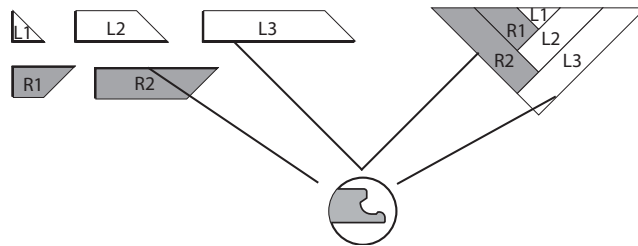
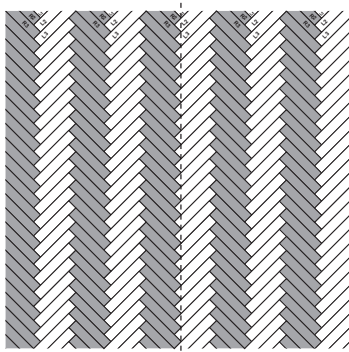
# ParquetVinyl

the look of wood the ease of vinyl

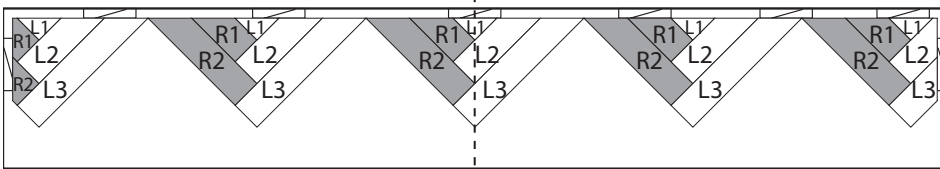


This sequence is given as an example, it will depend on the shape of the room. Important is to always start with the planks placed against the walls.

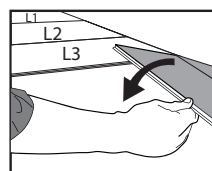
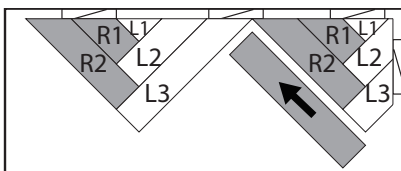
## METHOD 2 - HERRINGBONE PATTERN



At first, follow the cutting template on the inside of your box to cut the 5 pieces (L1, L2, L3, R1, R2) needed for one starting set. You will need a total of 5 planks in order to make the required 5 starting set pieces. You won't be able to use offcuts of the same planks within one set.



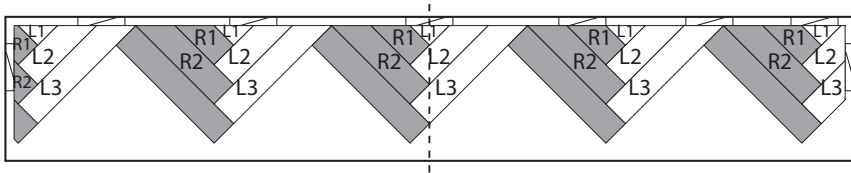
Align the first starting set with a chalk line going through the center line of the room (to center the installation, make sure the line goes through the tip of the pattern). Always leave a 8 mm expansion gap with the wall.



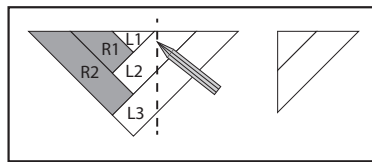
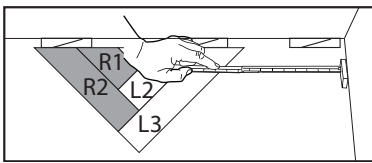
Measure how many starting sets you will need based on the width of the room. Prepare additional starting sets. You can connect the starting sets with one full plank.

# ParquetVinyl

the look of wood the ease of vinyl

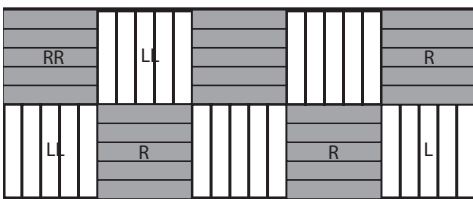


When you reach the walls on both sides, measure the distance between the wall and the closest starting set. Assemble a new set, mark the measured distance on it, cut the planks (the set can be disassembled for this) and install the planks in the gap.

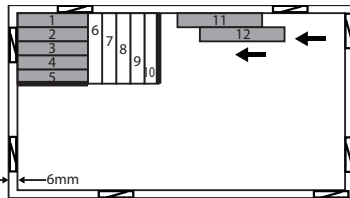


Continue this pattern until the room is entirely covered.

## METHOD 3 - BLOCK PATTERN

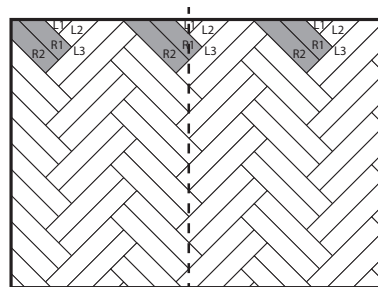
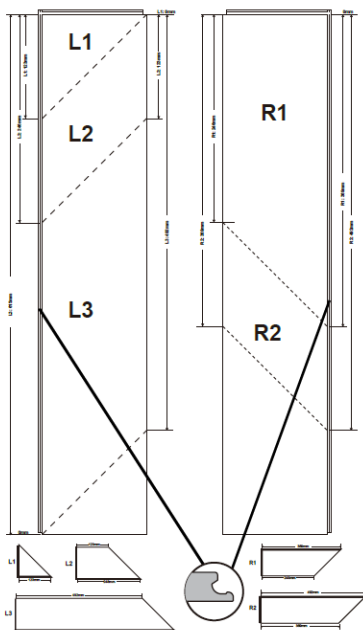


- This installation method consists in grouping 5 planks with the same profiling together. You can then start staggering your spacers across your wall, leaving a 8 mm expansion gap with the wall.
- Start in the left corner opposite from the main entrance with an R plank, put the tongue sides against the wall, and follow the sequence on the image (Refer to the clicking tips on the bottom of the page). Always leave 8 mm expansion gap with the wall.



**IMPORTANT:** We recommend to apply any high grab adhesive or multi-purpose glue inside the locking system at the short side of the planks for additional engagement, avoid using adhesive excessively and be sure to immediately wipe away any excess that comes out to the floor's surface.

## METHOD 4 - DOUBLE HERRINGBONE PATTERN



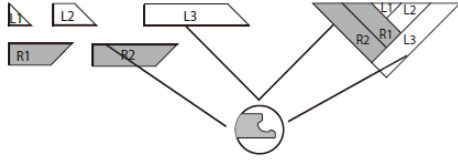
For the double herringbone pattern, the cuts are different than what is indicated in the template inside of the box. Use measurements in below table to cut the 5 planks (L1, L2, L3, R1, R2) of the starting set to the right size. For the starting set, the planks will only be cut lengthwise, not widthwise.



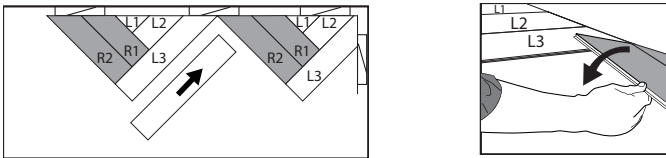
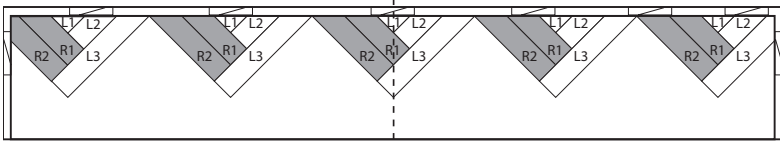
Plank	Groove side	Tongue side
L1	123 mm	0 mm
L2	246 mm	123 mm
R1	369 mm	246 mm
R2	492 mm	369 mm
L3	615 mm	492 mm

# ParquetVinyl

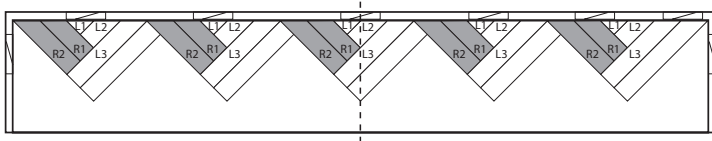
the look of wood the ease of vinyl



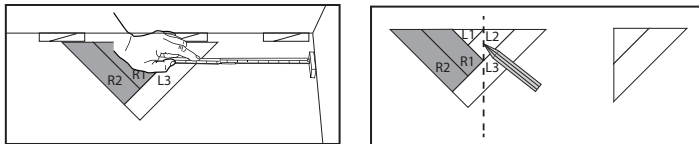
You will need a total of 5 planks in order to make the required 5 starting set pieces. You won't be able to use offcuts of the same planks within one set.



Align the first starting set with a chalk line going through the center line of the room (to center the installation, make sure the line goes through the tip of the pattern). Always leave a 8 mm expansion gap with the wall.



Measure how many starting sets you will need based on the width of the room. Prepare additional starting sets. you can connect the starting sets with one full plank.



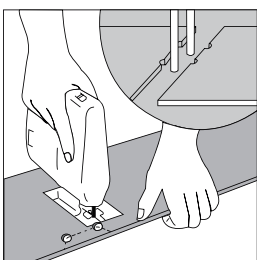
When you reach the walls on both sides, measure the distance between the wall and the closest starting set. Assemble a new set, mark the measured distance on it, cut the planks (the set can be disassembled for this) and install the planks in the gap.

Continue this pattern until the room is entirely covered.

## CLICKING TIPS

Place the short end tight to the perpendicular plank. Click it into the long end of the parallel panel at a 45° angle. Fold down in a single movement. It is recommended to slightly tap the planks on the edge after clicking them together to make sure they are clicked tightly.

NOTE: If you notice both planks aren't at the same height or are not well locked together, please follow the disassembling instructions at the bottom of the page, disassemble and check if any debris stuck inside the lock is obstructing.



Openings for pipes: Measure the diameter of the pipe and drill a hole that is 20 mm larger. Saw off a piece and lay the board in place on the floor. Then lay the sawed-off piece in place.



Door frames and skirting: Place a board with the bottom facing upwards against the door frame. Saw the door frame as shown in the image. Then install the board beneath the sawn door frame.

NOTE! Fit the skirting against the wall and not to the floor. The floor must be able to move within the expansion joint.

# ParquetVinyl

the look of wood the ease of vinyl

## **DISASSEMBLING**

To disassemble, simply lift the planks one by one following the opposite sequence as the installation.

## **FINISHING THE INSTALLATION**

- Replace molding or wall base, allowing slight clearance between the molding and the planks.
- Nail the molding to the wall surface, not through the flooring.
- At doorways and at other areas where the flooring planks may meet other flooring surfaces, it is preferable to use a "T" molding, or similar, to cover the exposed edge but not pinch the planks. Leave a small gap between the planks and the adjoining surface.

## **MAINTENANCE**

- Sweep or vacuum daily using soft bristle attachments.
- Clean up spills and excessive liquids immediately.
- Damp mop as needed and use cleaners recommended for vinyl flooring.
- The use of residential steam mops on this product is allowed. Use at lowest power with a suitable soft pad, and do not hold a steam mop on one spot for an extended period of time (longer than 5 minutes). Refer to the steam mop's manufacturer instructions for proper usage.
- Use proper floor protection devices such as felt protectors under furniture.
- Use a mat at entrance ways (please ensure the mat doesn't have a latex or rubber backing).
- Do not use abrasive cleaners, bleach or wax to maintain the floor.
- Do not drag or slide heavy objects across the floor.